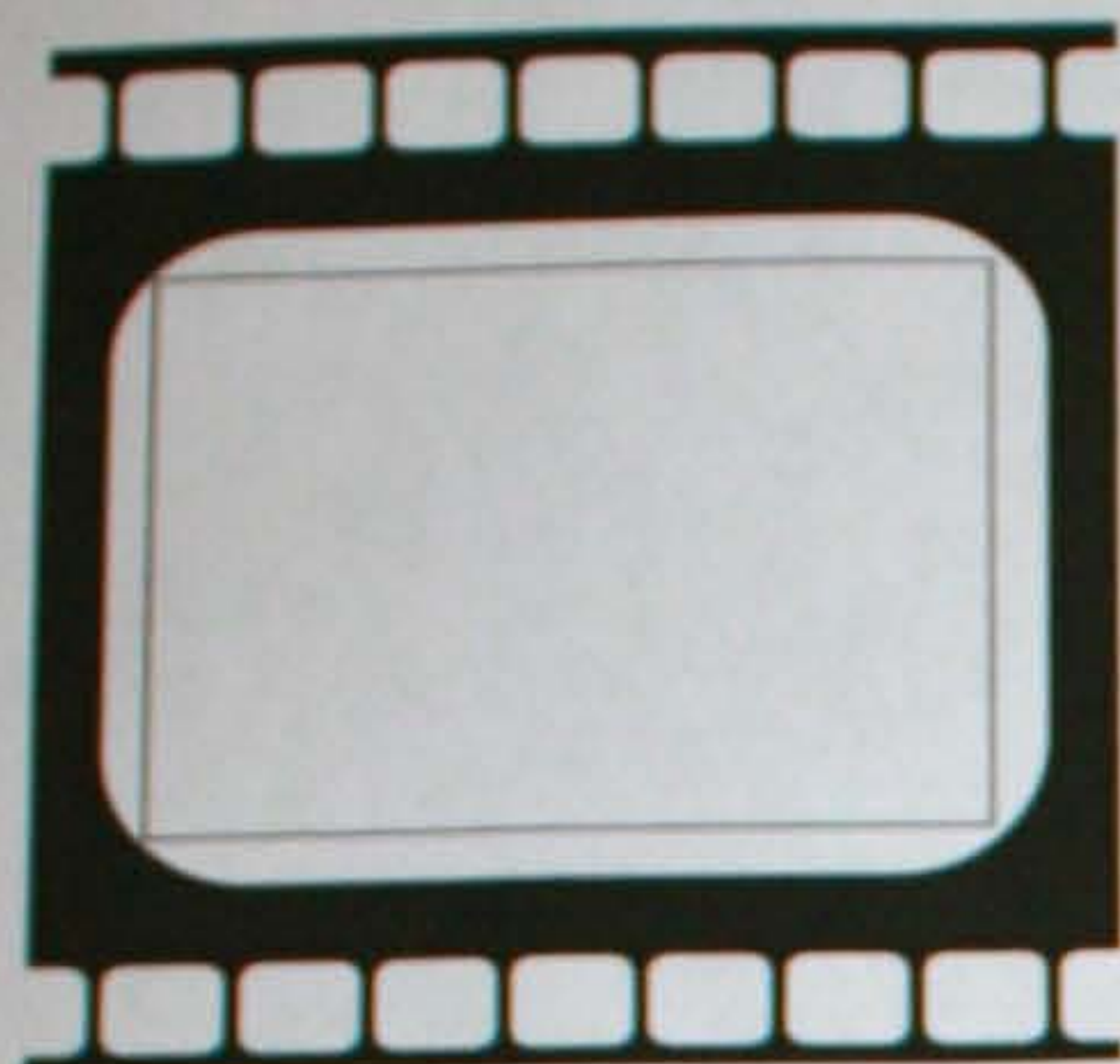
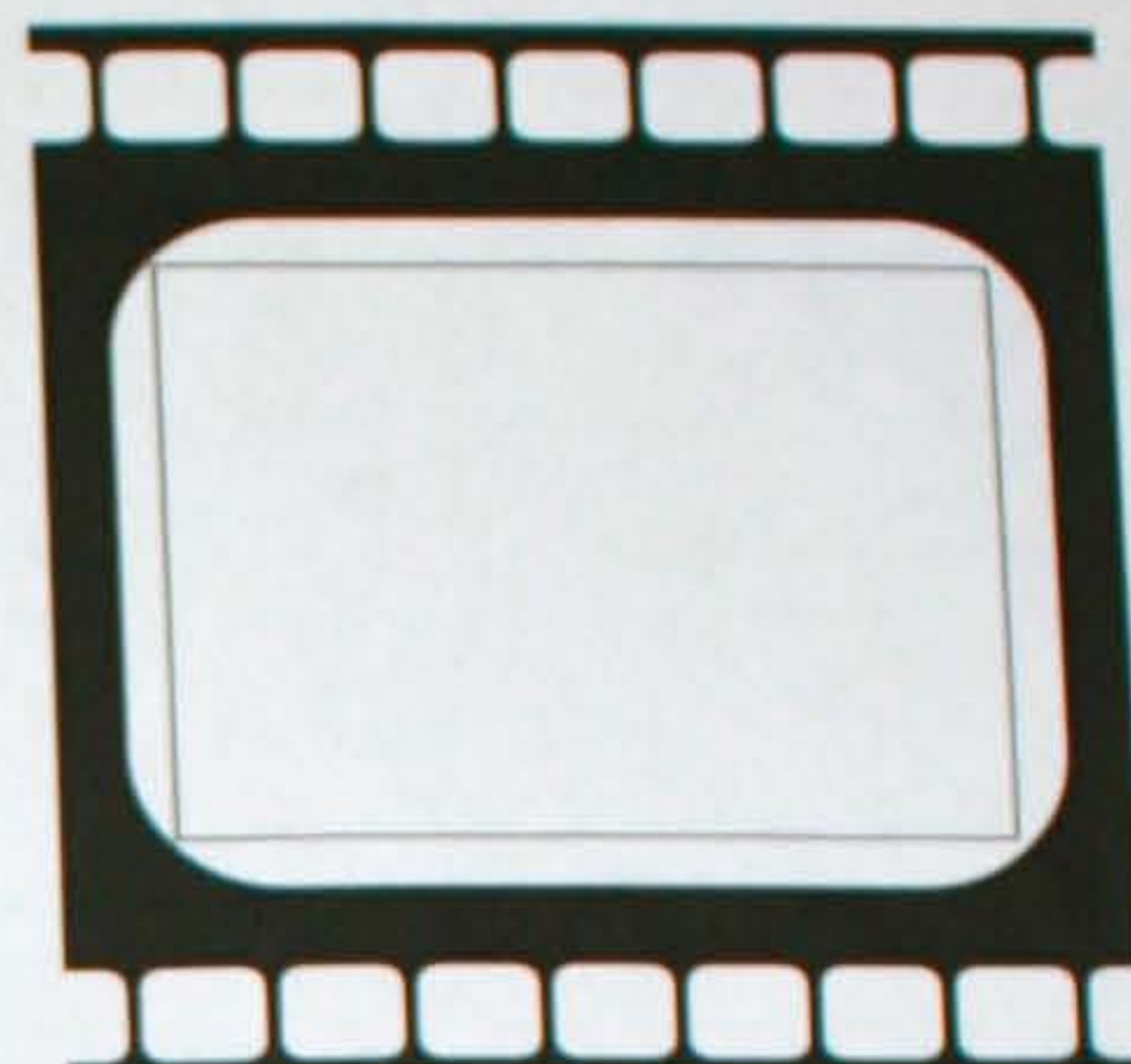


Today's  
Featured  
Number:



Today's  
Featured  
Letter:



Uppercase  
Alphabet  
Letters:

A B C D E F G H I  
J K L M N O P Q R  
S T U V W X Y Z

Lowercase  
Alphabet  
Letters:

a b c d e f g h i  
j k l m n o p q r  
s t u v w x y z

I've Been  
Framed!



Congratulations!

Mia

Can identify uppercase letters.  
Keep up the great work.

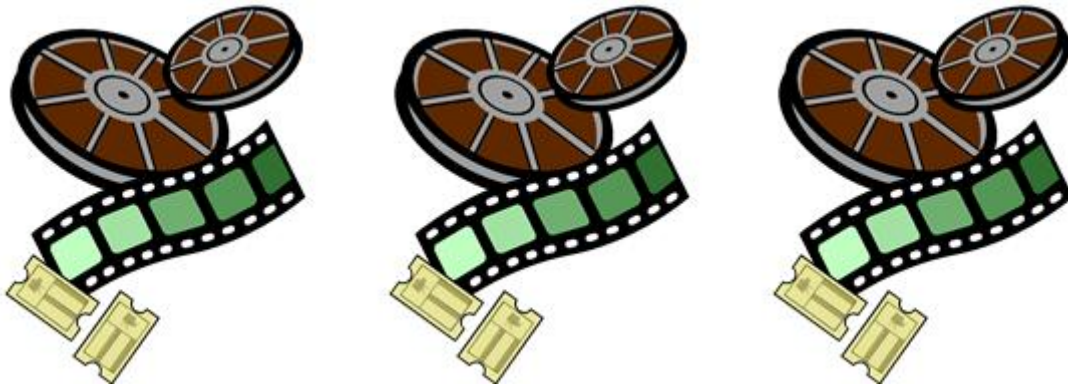
Mrs. Henderson October 17, 2012

Numbers

1 2 3 4 5 6 7 8 9 10







Filmstrip Fun is another way to review letters and numbers with your students.

Print off and laminate the "Today's Featured Letter" and "Number" posters. If you do a letter a day, make this part of your calendar routine and put these posters close by.

You can also display the complete upper and lowercase alphabet under their header cards, as well as the numbers.

I've provided upper and lowercase letters + numbers 0-10 for you to run off and laminate. To make things quick and easy, use Velcro dots to attach them.

Run off extra sets so that your students can play Memory Match Concentration games as well as "I Have; Who Has?"

Make copies of the upper and lowercase bookmarks for each student.

Have children "spy" the various letters with a filmstrip "spy glass".

To make them, cut out the center rectangles on the filmstrips with an Exacto knife and then run the sheet through the laminator.

Cut the "spy glasses" out in sections of 2 so that the filmstrip on the bottom can be trimmed and used as a gluing tab. (See photo.)

I used a large glue dot to adhere the "window" to a Popsicle stick. Write students' names on with a black permanent marker.

When students pass the various report card standards for letters and numbers reward them with an "I've Been Framed!" certificate.

Make a copy of your class composite and glue each student's photo to the filmstrip mini-frame.

Write their name under the congratulations word and then sign and date the certificate.

I hope you enjoy Filmstrip Fun and having one more way to review letters and numbers with your sweeties!



**U p p e r c a s e**

**A l p h a b e t**

**L e t t e r s :**

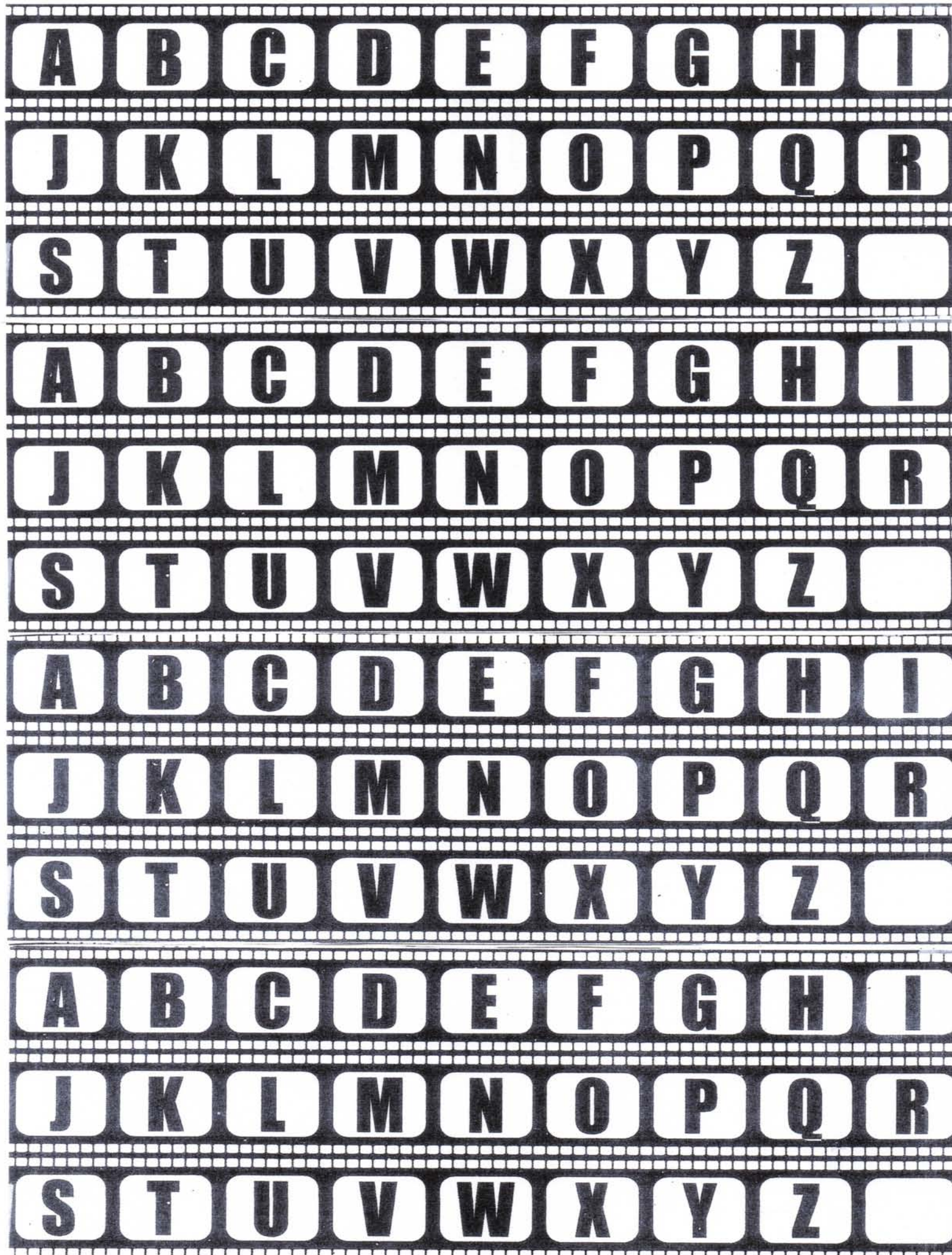
**L o w e r c a s e**

**A l p h a b e t**

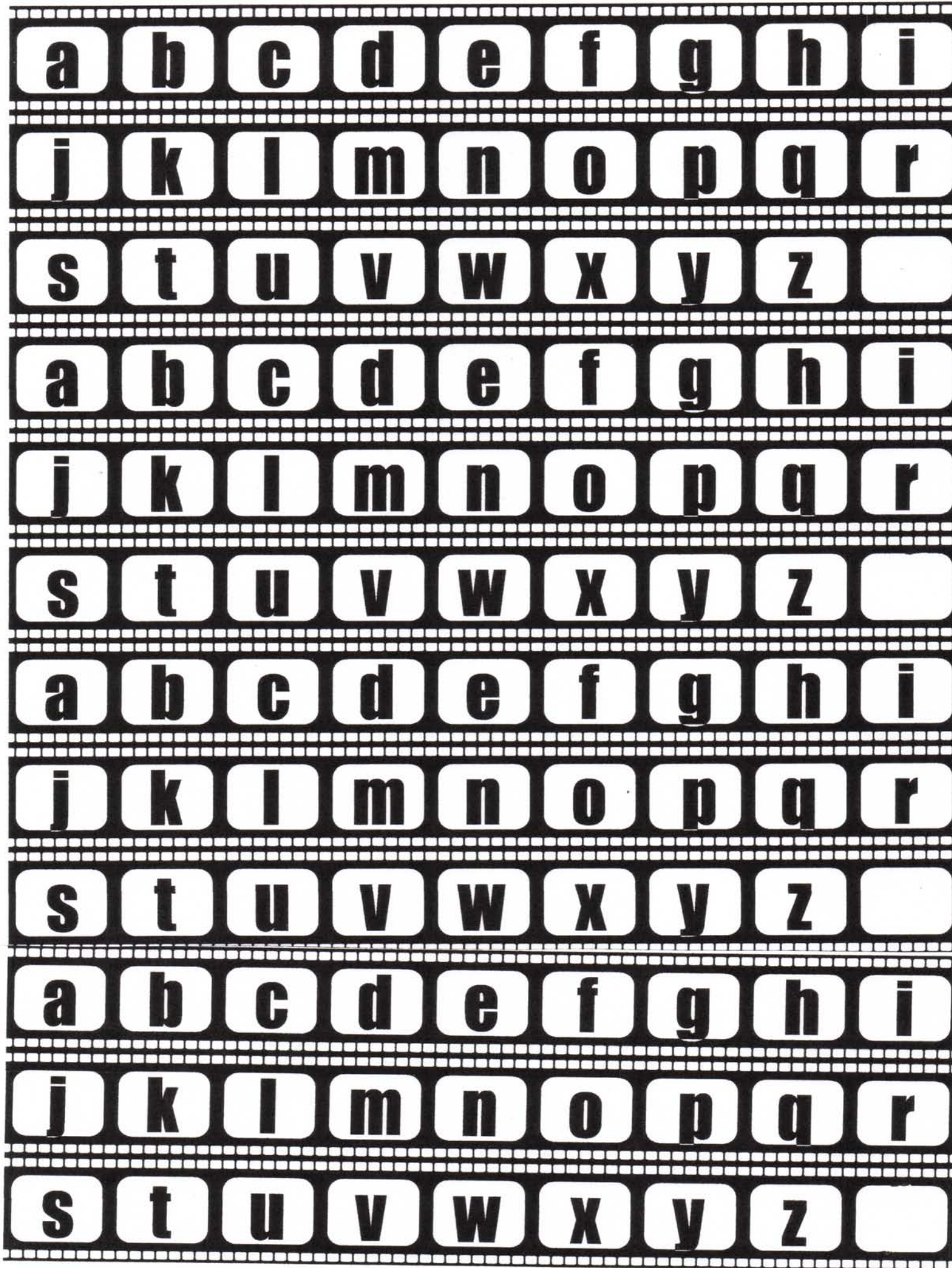
**L e t t e r s :**

**N u m b e r s**

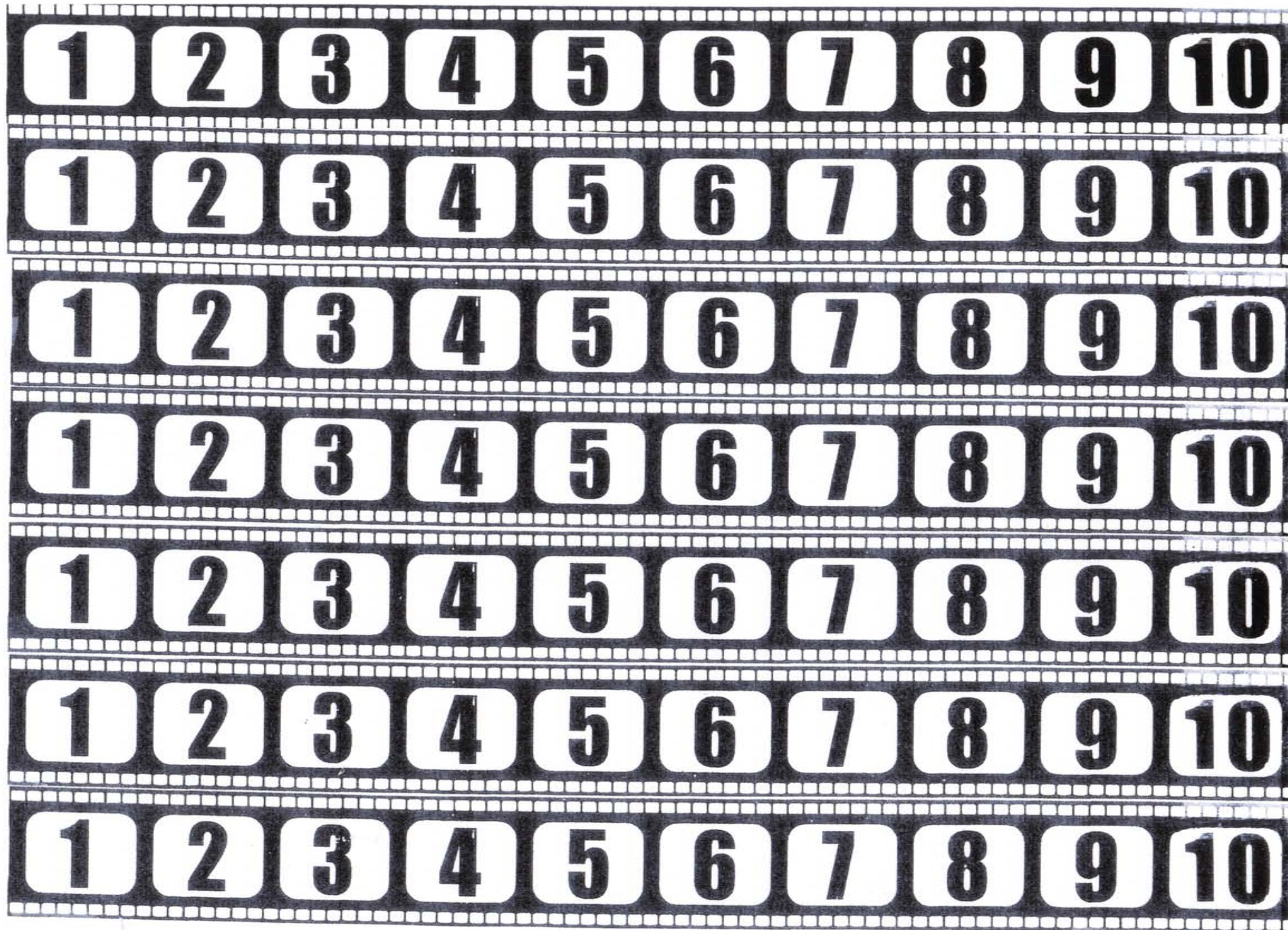




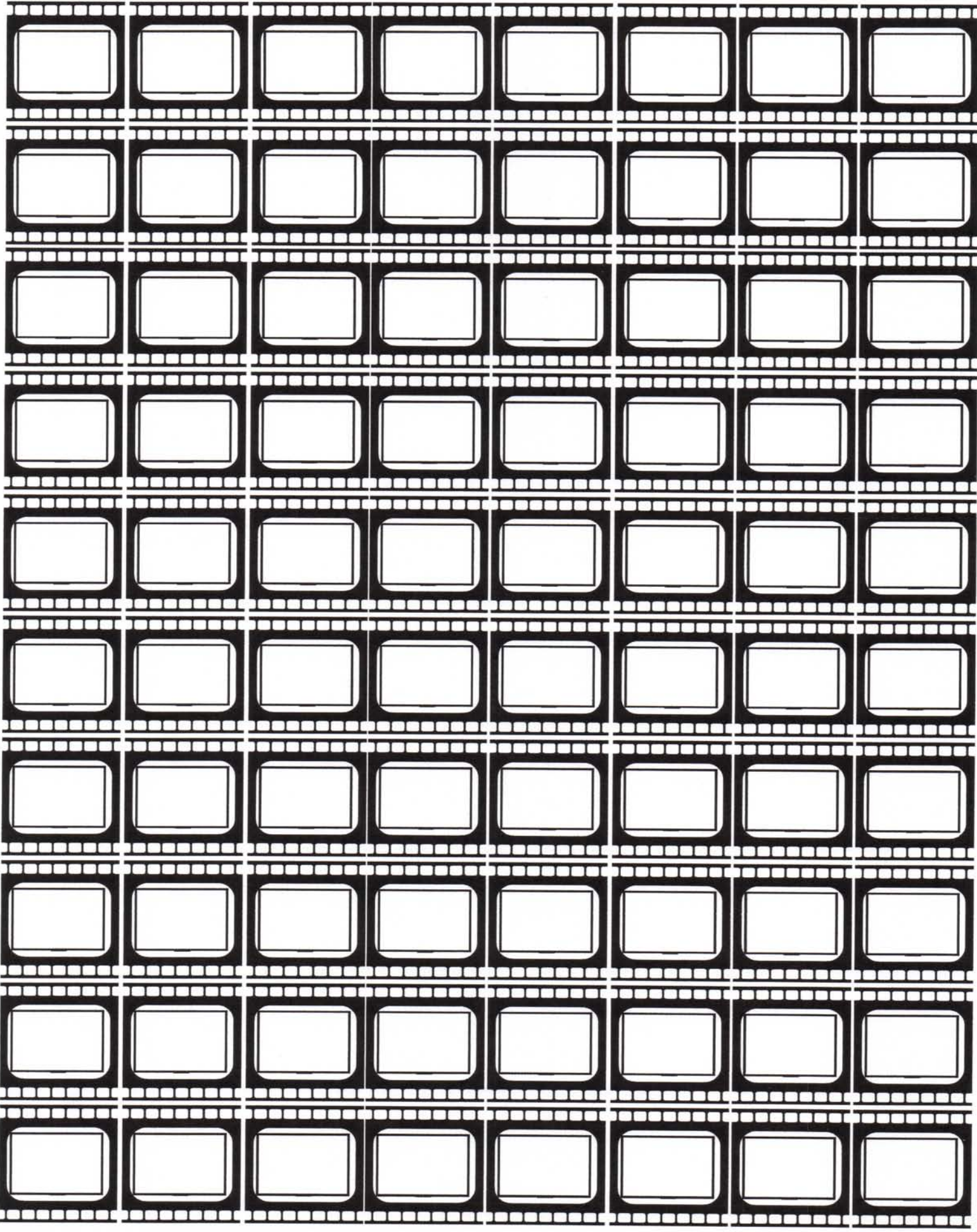






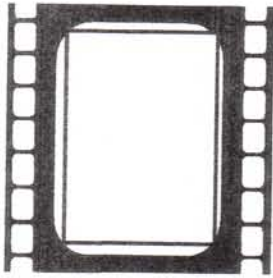








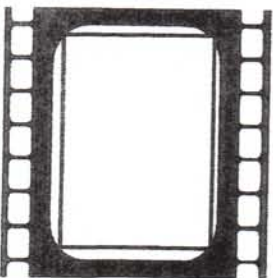
**I' ve Been  
Framed!**



Congratulations!

Can say the alphabet!  
Keep up the great work.

**I' ve Been  
Framed!**

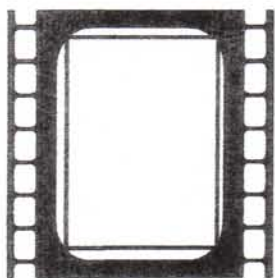


Congratulations!

Can say the alphabet!  
Keep up the great work.



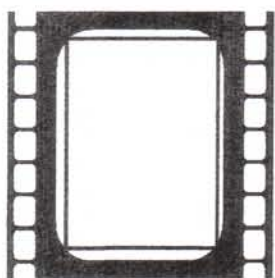
**I' ve B e e n  
F r a m e d !**



Congratulations!

Can identify uppercase letters.  
Keep up the great work.

**I' ve B e e n  
F r a m e d !**

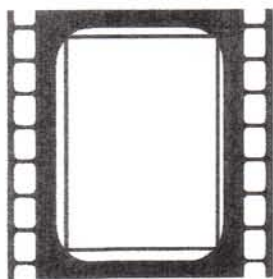


Congratulations!

Can identify uppercase letters.  
Keep up the great work.



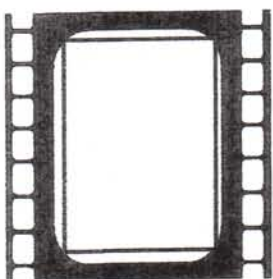
**I' ve B e e n  
F r a m e d !**



Congratulations!

Can identify lowercase letters.  
Keep up the great work.

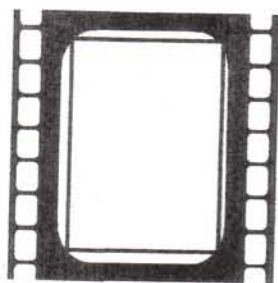
**I' ve B e e n  
F r a m e d !**



Congratulations!

Can identify lowercase letters.  
Keep up the great work.

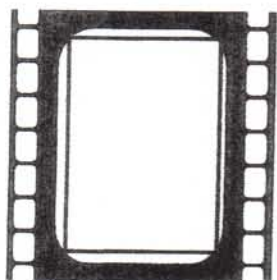




**I' ve Been  
Framed!**

Congratulations!

Can tell the difference between numbers & letters!  
Keep up the great work.



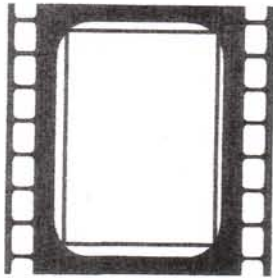
**I' ve Been  
Framed!**

Congratulations!

Can tell the difference between numbers & letters!  
Keep up the great work.



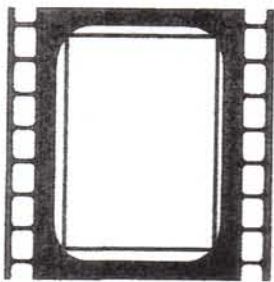
**I' ve Been  
Framed!**



Congratulations!

Can identify numbers 1-10.  
Keep up the great work.

**I' ve Been  
Framed!**

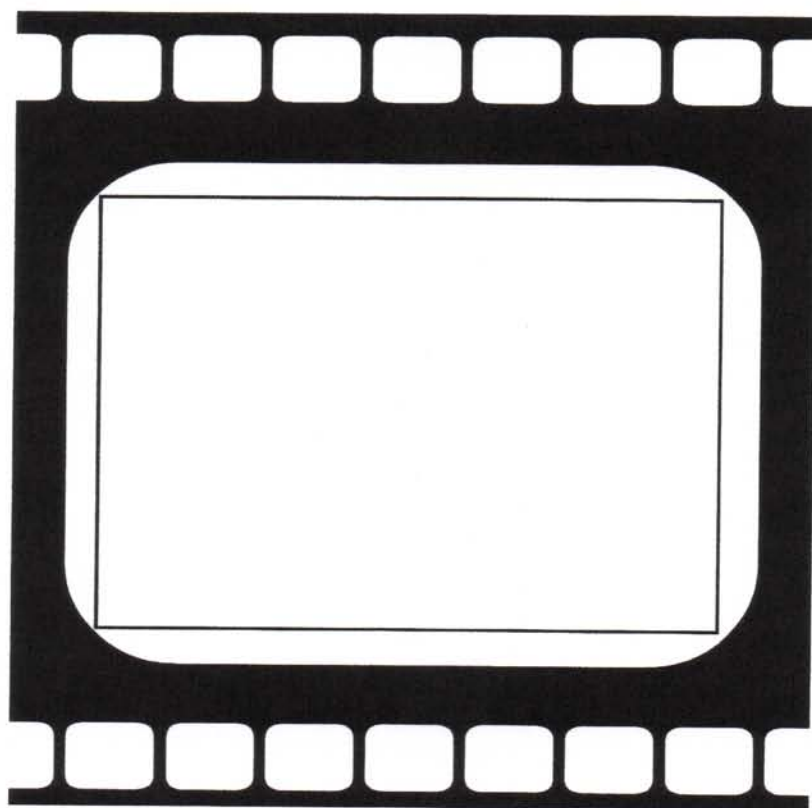


Congratulations!

Can identify numbers 1-10.  
Keep up the great work.



**T o d a y ' s**  
**F e a t u r e d**  
**L e t t e r :**







**A**

**B**

**C**

**D**





**E**

**F**

**G**

**H**





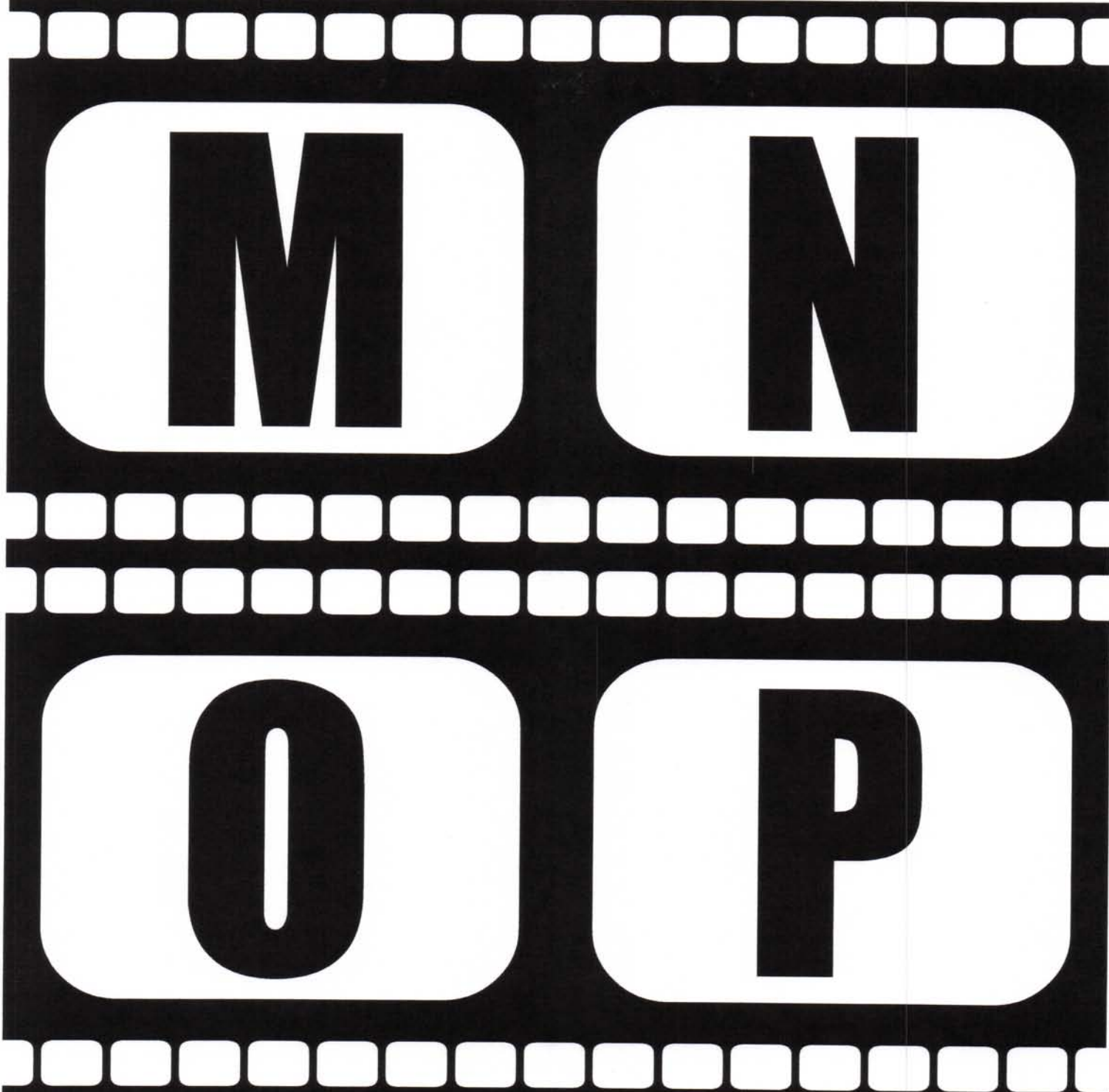
**I**

**J**

**K**

**L**



A black and white graphic of a film strip. The film strip is black with white sprocket holes along the top and bottom edges. The word 'MONOP' is written in large, bold, black, sans-serif capital letters across the center of the film strip. The letters are contained within white rectangular frames that have rounded corners, resembling film frames. The 'M' and 'N' are on the top frame, and the 'O' and 'P' are on the bottom frame. The 'O' is a simple circle, and the 'P' has a short vertical stem.

**M**

**N**

**O**

**P**



A black and white graphic of a film strip. The film strip has a black border with white sprocket holes along the top and bottom edges. Inside the strip, there are four frames, each containing a large, bold, black letter on a white background. The letters are Q, R, S, and T, arranged in two rows of two. The top row contains Q and R, and the bottom row contains S and T. The film strip is slightly curved, giving it a three-dimensional appearance.

**Q**

**R**

**S**

**T**





U

V

W

X





**Y**

**Z**

**y**

**z**





**a**

**b**

**c**

**d**





**e**

**f**

**g**

**h**



i

j

k

l





**m**

**n**

**o**

**p**





**q**

**r**

**s**

**t**





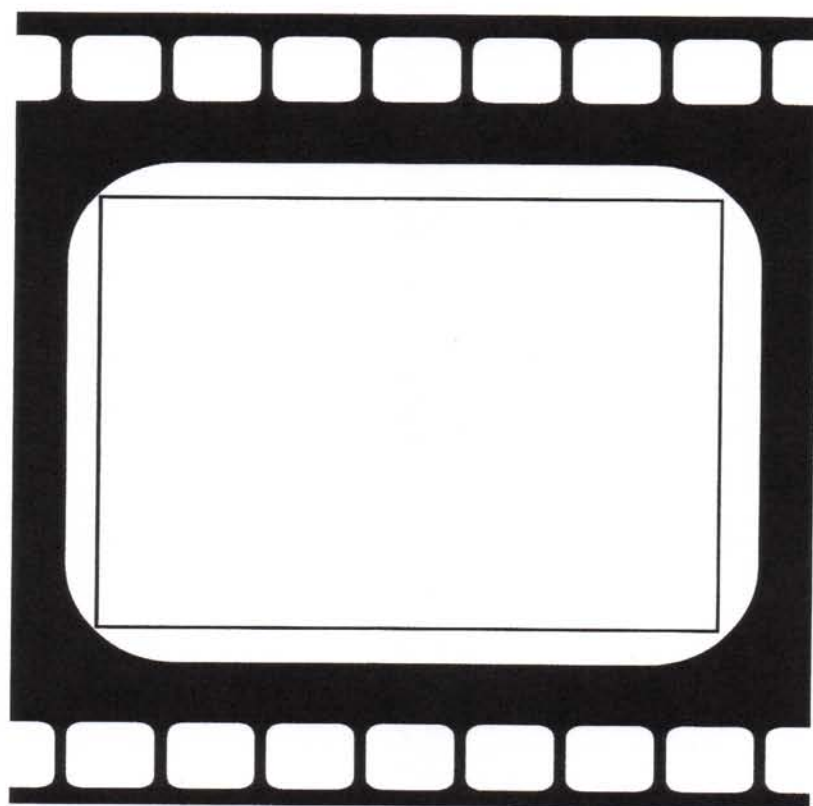
**U**

**V**

**W**

**X**

**T o d a y ' s**  
**F e a t u r e d**  
**N u m b e r :**







0

1

2

3



**4**

**5**

**6**

**7**





8

9

10